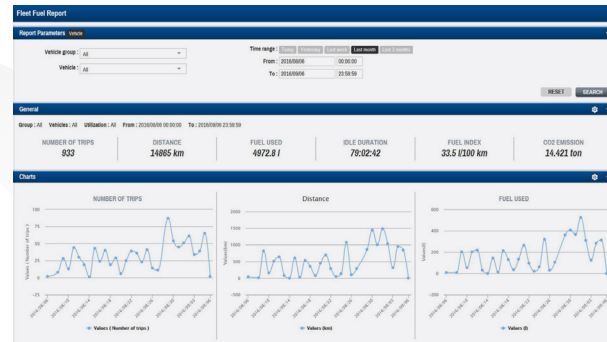
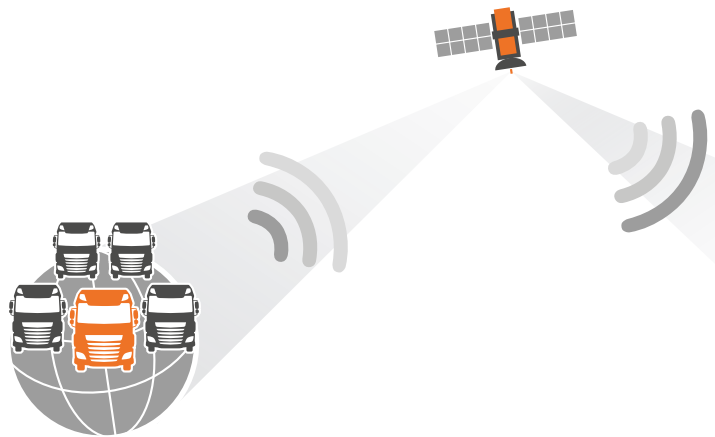
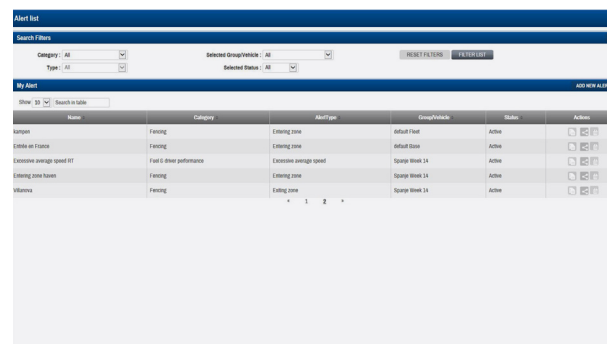
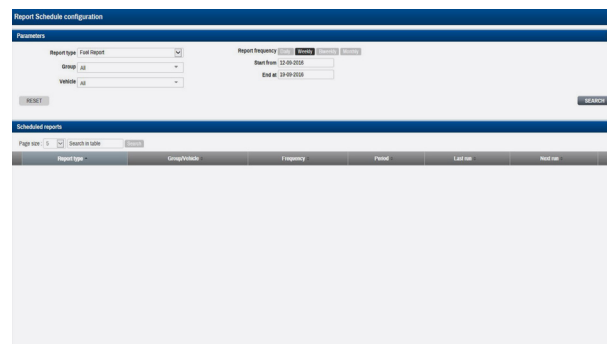


Introducing DAF Connect



Vehicle and Driver Fuel Report

The Vehicle and Driver Fuel Report provides an overview of fuel consumption and driving behaviour per vehicle and driver, which makes it possible to monitor and compare the performance of vehicles / drivers. The total fleet performance over a selected period of time can be shown as well. These overviews will increase the awareness of the effect of driving style on for example fuel consumption and are appropriate tools to improve efficient driving.



Report scheduling

DAF Connect reports on Fleet fuel, Fuel level deviation and Fleet utilisation, can automatically be sent by e-mail to multiple stakeholders to keep them accurately informed. Depending on the preferences these reports can be sent on a daily or weekly basis.

Alerts

The portal will display notifications (alerts) of deviations from certain pre-set criteria on vehicle status like speed, idling time, fuel consumption, route and geofences. These alerts can automatically be forwarded by e-mail or sms to a person or group of persons not having access to the portal. It is possible to create Points Of Interest and include them in this customised real-time messaging of pre-selected events.

For further information please contact your local DAF dealer.

DAF Connect



Introducing DAF Connect



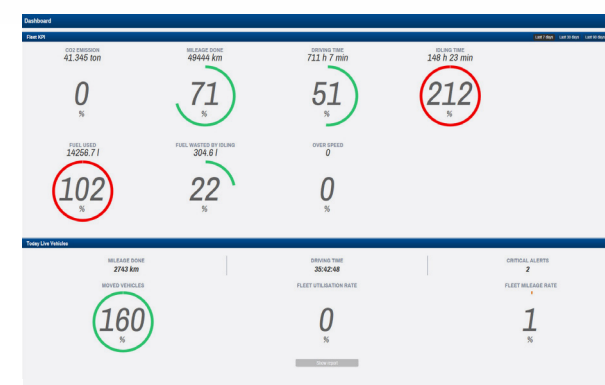
DAF Connect is an on-line, easy to use fleet management system. It provides real-time truck, driver and location information per vehicle or selected vehicles or even per entire fleet. Main key performance indicators (KPI) such as routes, driving time, fuel consumption and fleet utilisation are clearly displayed in one overview. Specific cross-system selections can be made to allow for example comparison of data. Deviations to certain pre-set criteria on vehicle status like idling time, speed and geofencing (when vehicles are nearing pre-selected locations) can be provided to enable immediate action when necessary. Real-time visibility of truck location leads to exact knowledge on the whereabouts of a vehicle, driving times and driver availability, which will improve logistical planning. Route analysis is possible and may reduce costs by avoiding unsafe routes. Insight in the technical condition of the vehicles allows a pro-active maintenance planning resulting in less unplanned repairs and higher vehicle availability.



DAF Connect is part of DAF Transport Efficiency, our philosophy to optimize the return per kilometre. DAF Connect helps to increase vehicle availability, enhance logistical efficiency and reduce operational costs.

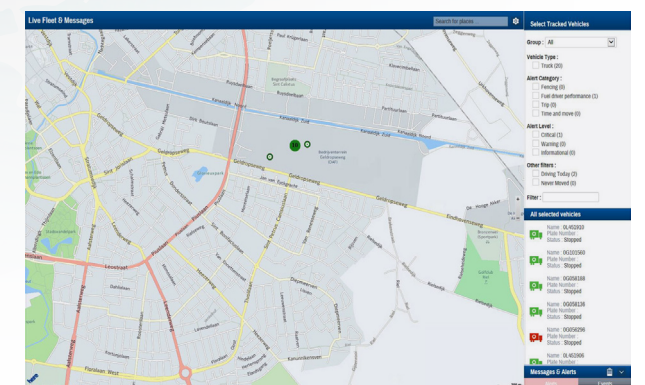
What do you get when ordering DAF Connect?

- An on board DAF Connect Module (DCM)
- A GSM + GPS DAF Connect antenna on the cab roof
- 3 year access to the following modules via the DAF Connect internet portal:



Dashboard

A user-friendly, customisable dashboard presents the fleet's main KPI and targets over the last seven days in one, clear overview. This overview can also be provided covering the last 30 or 90 days. The KPI, for example mileage done, driving time and fuel consumption, are displayed as percentage circles of the pre-set targets and show real-time information. When moving over a percentage circle a mouse-over text will show a comparison with the previous period. Other overviews provide information on the vehicles operating that very day, alerts over the last 24 hours and fleet utilisation per day over the last seven, 30 or 90 days. Additional functionalities regarding for instance vehicle location, fuel reports and the possibility to compare vehicles and drivers, can be accessed through the menu left of the dashboard.



Live Fleet

Live Fleet shows the exact location of the vehicles on a map. The module contains Trip Tracing and Trip Report. Trip Tracing visualises the trips of a selected vehicle on a map including distances covered and driving time per vehicle and driver. Trip Report displays the trips and various performance details over a selected period in time in a table. It is possible to compare trips and several filters can be used to optimise planning.